

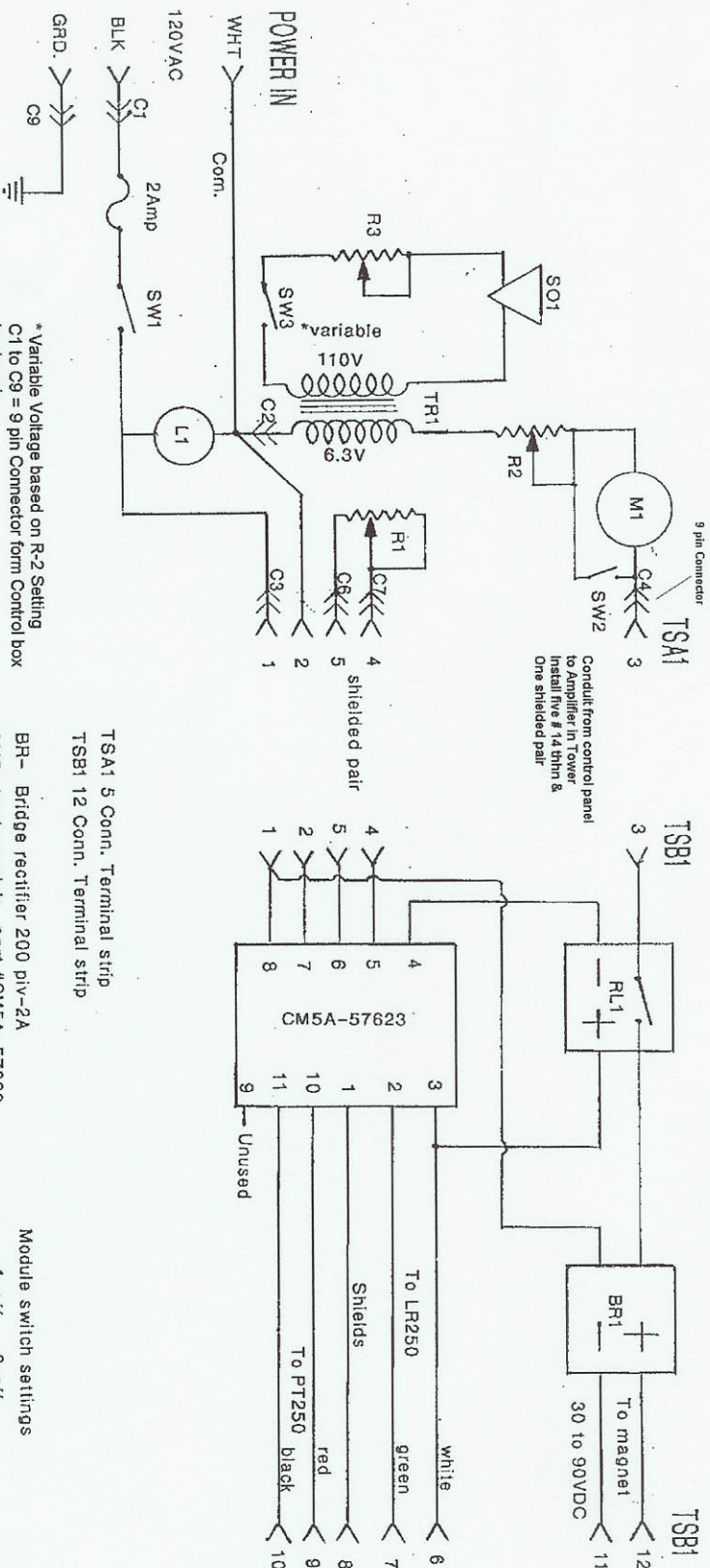
# Model 6A Pendulum Amplifier

## Control Panel

Panel 1 of 2

## Amplifier Panel

Panel 2 of 2  
Located near tower



\* Variable Voltage based on R-2 Setting  
C1 to C9 = 9 pin Connector form Control box  
to chassis.

Pin color code

- 1-Blk = 120VAC to Chassis
- 2-Wht = 120VAC nut.
- 3-Red = 120VAC to Tower & Amplifier
- 4-Blue = Variable AC power to Magnet
- 5-No Con.
- 6-Yel = Timing control
- 7-Orq. = Timing Control
- 8-No Con
- 9-Gm. = Ground

TSA1 5 Conn. Terminal strip  
TSB1 12 Conn. Terminal strip

- BR- Bridge rectifier 200 pIV-2A
- CM5- Logic module part #CM5A-57623
- L1- Neon light
- M1- milliammeter
- R1- Time ON control 250K 1/2W
- R2- Amplitude control 500 ohm 50W
- R3- Tone volume 50K
- RL1- Relay
- TR1-transformer 6.3V-1.2A
- SO1- Sonalert
- SW1- Power switch
- SW2- Meter switch
- SW3- Tone switch

### Module switch settings

- 1-off 6-off
  - 2-off 7-on
  - 3-on 8-on
  - 4-off 9-off
  - 5-on 10-on
- 4 switch group  
1-on 3-on  
2-off 4-off

Academy Pendulum Sales  
 El Cerrito, CA. 94530  
 Ph. 510-215-0446  
 E=cponchione@netzero.com